



# GAT MONTHLY MEMBERSHIP PROGRESS REPORT

Results as of: 4/30/2023

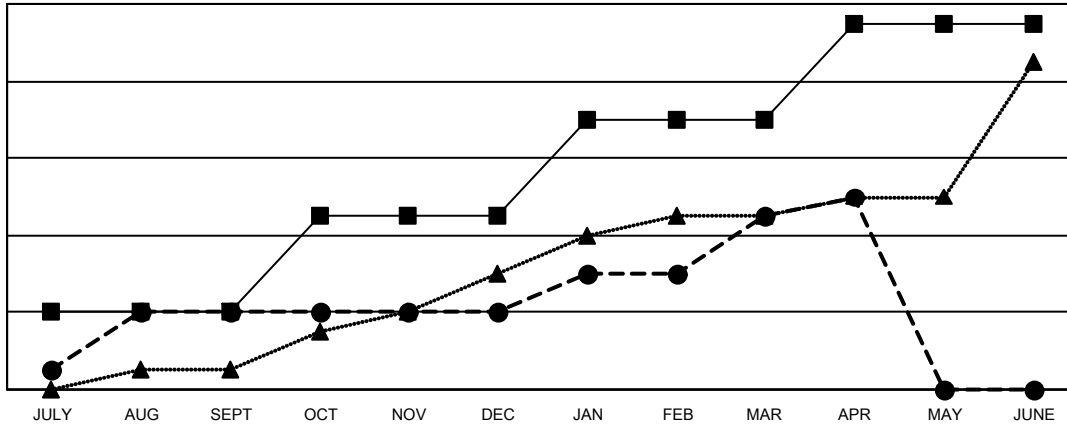
Multiple District 411

LOCATION: KENYA AFRICA

Clubs			
RESULTS FOR 2022-2023			
QUARTER	NEW CLUB GOAL	NEW CLUBS	DROPPED CLUBS
JULY/AUG/SEPT	4	4	1
OCT/NOV/DEC	5	0	9
JAN/FEB/MAR	5	5	2
APR/MAY/JUNE	5	1	0

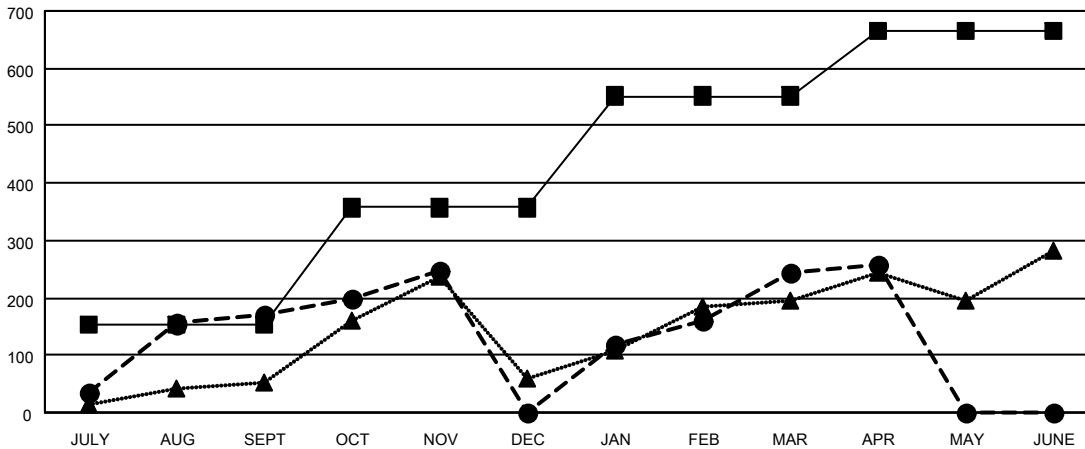
Members			
RESULTS FOR 2022-2023			
QUARTER	MEMBER GROWTH NET GOAL	MEMBER GROWTH ACTUAL	DROPPED MEMBERS ACTUAL (including transfers)
JULY/AUG/SEPT	152	269	95
OCT/NOV/DEC	205	216	382
JAN/FEB/MAR	195	400	117
APR/MAY/JUNE	112	47	33

GOALS AND ACTUAL NEW CLUBS CUMULATIVE



- CURRENT YEAR GOALS FOR NEW CLUBS
- CURRENT YEAR ACTUAL NEW CLUBS
- ▲- LAST YEAR ACTUAL NEW CLUBS

GOALS AND ACTUAL MEMBERS CUMULATIVE



- MEMBER GROWTH NET GOAL
- MEMBER GROWTH ACTUAL
- ▲- LAST YEAR MEMBERSHIP ACTUAL

DROPPED CLUBS: 12	
<b>DROPPED MEMBERS</b>	
DECEASED	13
CLUB CANCELLED	223
OTHER	391
<b>TOTAL</b>	<b>627</b>

101 CLUBS OF 153 ADDED 1 OR MORE NEW MEMBERS

[CLICK HERE FOR CUMULATIVE MEMBERSHIP DATA](#)

GENDER DISTRIBUTION	
MALE	2,621 (60.50%)
FEMALE	1,704 (39.34%)
NON BINARY	0 (0.00%)
PREFER NOT TO ANSWER	7 (0.16%)
<b>TOTAL FAMILY UNIT MEMBERS</b>	<b>1,317</b>
<b>FAMILY MEMBERS PAYING HALF DUES</b>	<b>818</b>